



Bear Valley
Hospice_{LLC}

Hospice is a very helpful service, but determining if you or your loved one is ready for hospice can be a difficult decision. The flow chart to the right is a simple tool to see if hospice may be appropriate or not.

If you have any questions about hospice or whether it may be time to get the extra help hospice provides, please contact us at:

Phone

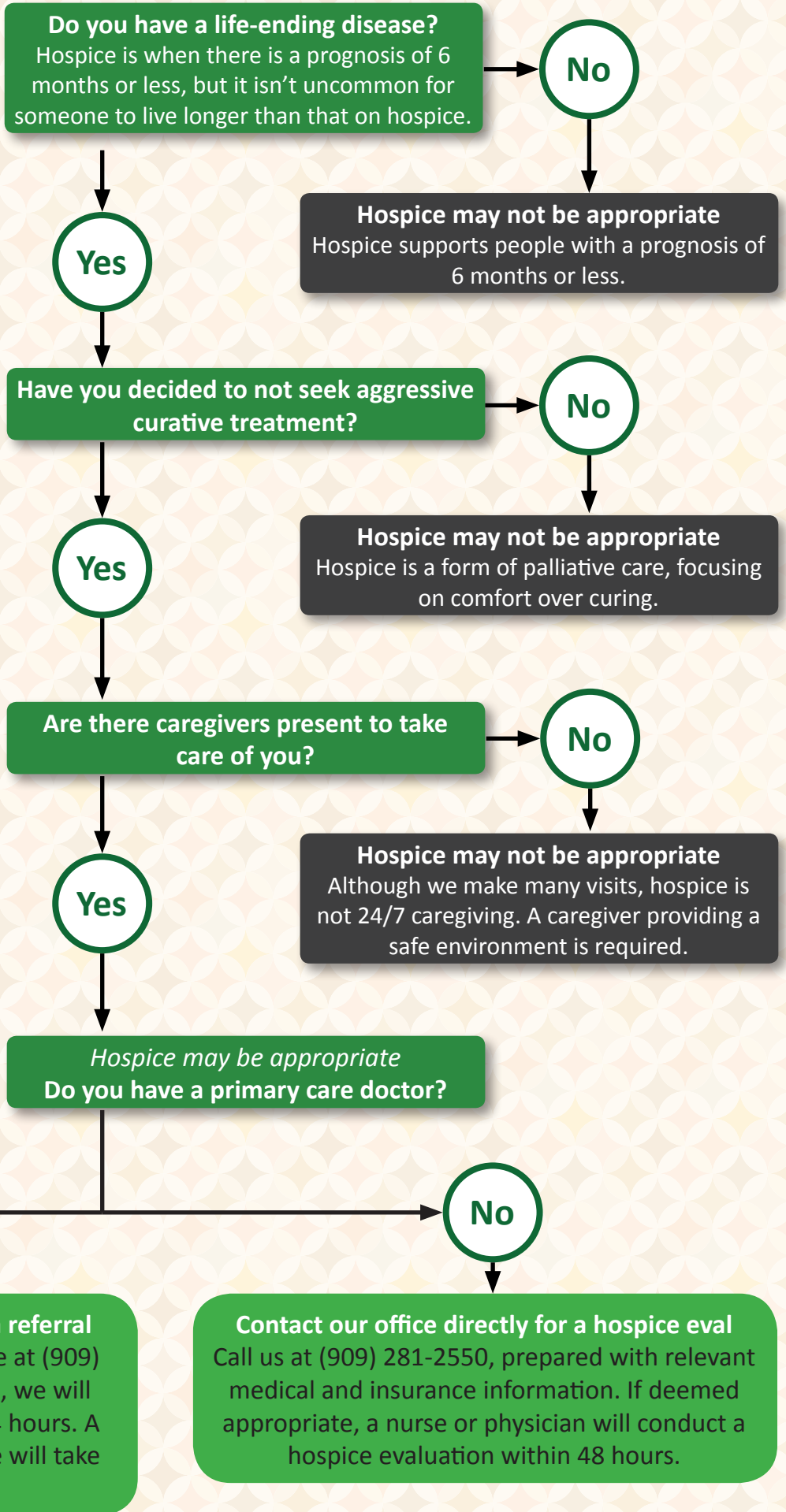
(909) 281-2550

Fax

(909) 281-2551

Email

info@bearvalley.hospice.com





Do You Know What Hospice Is?

Not being aware of the full benefits of hospice can prevent you or a loved one from having the best quality of life and support at its most valuable time. Read on to learn about some of the myths and facts of hospice care in Big Bear.

When is someone eligible for hospice care?

Hospice **isn't** just for the last few days of life – but can help provide comfort and extra support for someone and their family for many months. The main criteria for hospice eligibility is a prognosis of 6 months or less, but it isn't uncommon to receive hospice support for much longer than that, too.

What is hospice care?

Hospice is a holistic form of care that focuses on comfort and support near the end of life. Instead of trying to aggressively cure a disease, we are there to ensure the person is able to spend this time with friends & family without pain.

What services are provided?

You can expect to be supported with visits from skilled nurses, home health aides, a social worker, chaplain, and volunteers as needed. Hospice is also there to support the family through issues of grief and transition.

Is it free?

Hospice is paid for through Medicare Part A. If you are 65 or older and paid Medicare taxes while working, you will not need to pay for hospice. If you don't qualify for Medicare Part A, ask us about other ways hospice is covered.

Do I have to go down the hill?

No! We will come to you, providing hospice services at your home or wherever you reside in Big Bear.

How Hospice can help:

- **No Additional Costs:** Most of the time, hospice is covered through Medicare Part A.
- **Pain Management:** Our goal is to provide the comfort necessary to be present with family.
- **Patient Care:** Nurses and home health aides provide intermittent help throughout the week.
- **Medications:** Medications related to the hospice condition are included with hospice care.
- **Social Issues:** A social worker can assist with advanced directives and help find resources to aid with needs arising at the end of life.
- **Spiritual Issues:** Hospice chaplains are available to talk and provide support.
- **Medical Equipment:** We can provide required equipment, such as a hospital bed and oxygen.

Do I have to wait for nurses to come up the hill?

No! All our staff lives in Big Bear, so we can provide help whenever it is needed.

Can I still go to the hospital for other treatments?

Most individuals receiving hospice care are able to receive all of their treatments at home. When symptoms are difficult to manage at home, we have the option of moving you into the skilled nursing facility with 24 hour nursing to provide care. If you decide to seek aggressive treatments (curative, not palliative) you may stop hospice care and seek these treatments at the hospital as before.

What does hospice not cover?

While we will make many visits each week to support the individual and their family, hospice does not take the place of 24/7 caregiving, however. If family are unable to be there, caregivers from Home Instead can be a great source of help! Also, medications not related to the hospice condition are not covered and should be paid for by your regular insurance.